



All AR and ES SERIES STEAMERS THERMAL FUSE REPLACEMENT INSTALLATION KIT (#1412-41)



CAUTION: BEFORE ATTEMPTING SERVICE, SHUT OFF ALL POWER

Kit #1412-41 contains the following:

Description	EmberGlo Part No.	Qty	Description	EmberGlo Part No.	Qty
Thermal Fuse Wire Assembly	1412-40	1	Wiring Label - AR30 & AR60 Models	5636-10	1
#6-32 x .25 SS L-Key Screws	Hardware	2	Wiring Label - AR60T Models	5600-65	1
#6 SS Lock Washer	Hardware	2	Service Bulletin Replacement Instructions	8471-56	1
#6-32 Nut	Hardware	2			

INSTRUCTIONS FOR REPLACEMENT OF CERAMIC FUSE WITH ATTACHED LEADS

ES Series Steamers

1. Turn off steamer unit and disconnect from power source.
2. Remove access cover.
3. Disconnect wires from the left side of heating element and left side of thermostat.
4. Gently push back insulation material from the ceramic fuse to expose the mounting screws.
5. Remove mounting screws and discard. New mounting screws are provided in kit.
6. Reverse previous procedures to install replacement fuse.
7. Turn power on and verify for proper steamer operation.

AR Series Steamers

1. Turn off steamer unit and disconnect from power source.
2. Remove back panel and top cover.
3. Drill two $\varnothing 0.177$ " diameter holes with a #16 drill bit in the generator mounting plate as shown in *Figure 1*. Or use the Template - *Figure 2*
4. Clean drill filings from the holes.
5. Install thermal fuse assembly with provided hardware.
6. Connect fuse in series between the heat generator and thermostat. (Refer to supplied wiring label).
7. Install back panel and top cover.
8. Turn power on and verify for proper steamer operation.

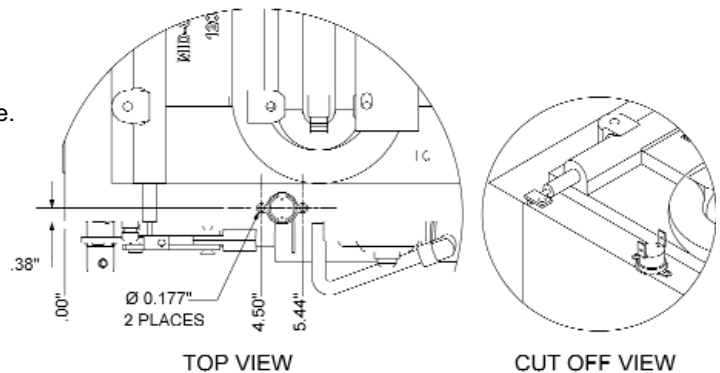


Figure 1

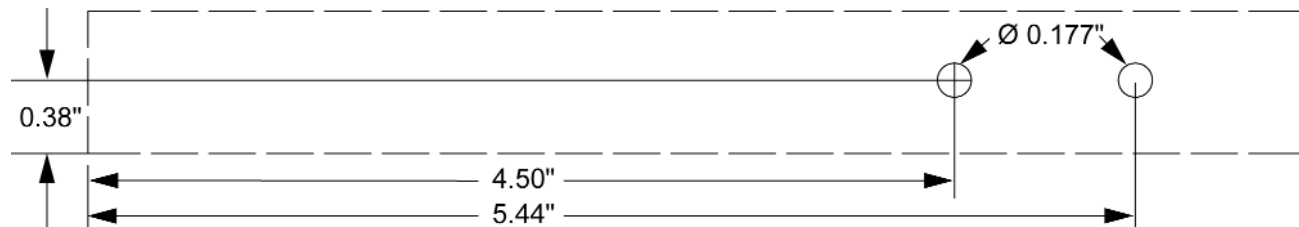


Figure 2

